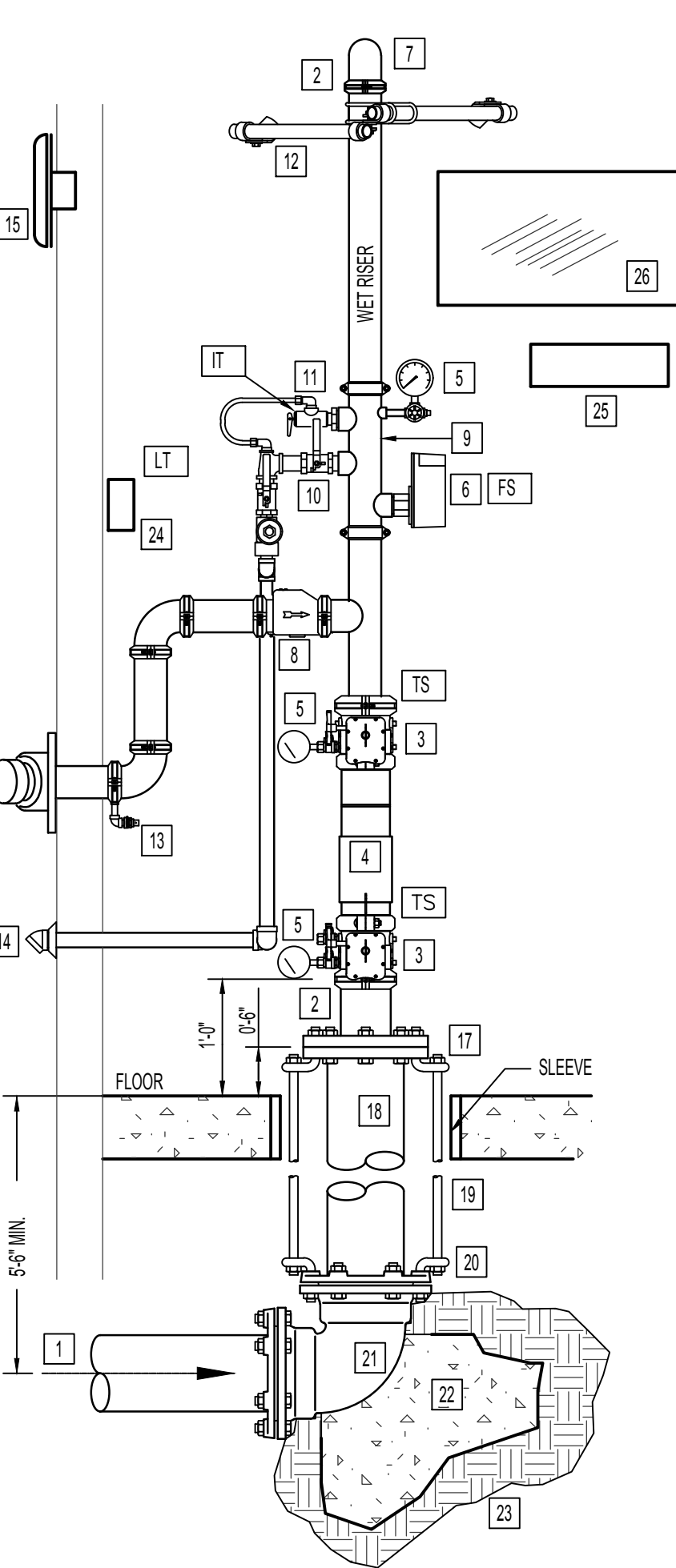


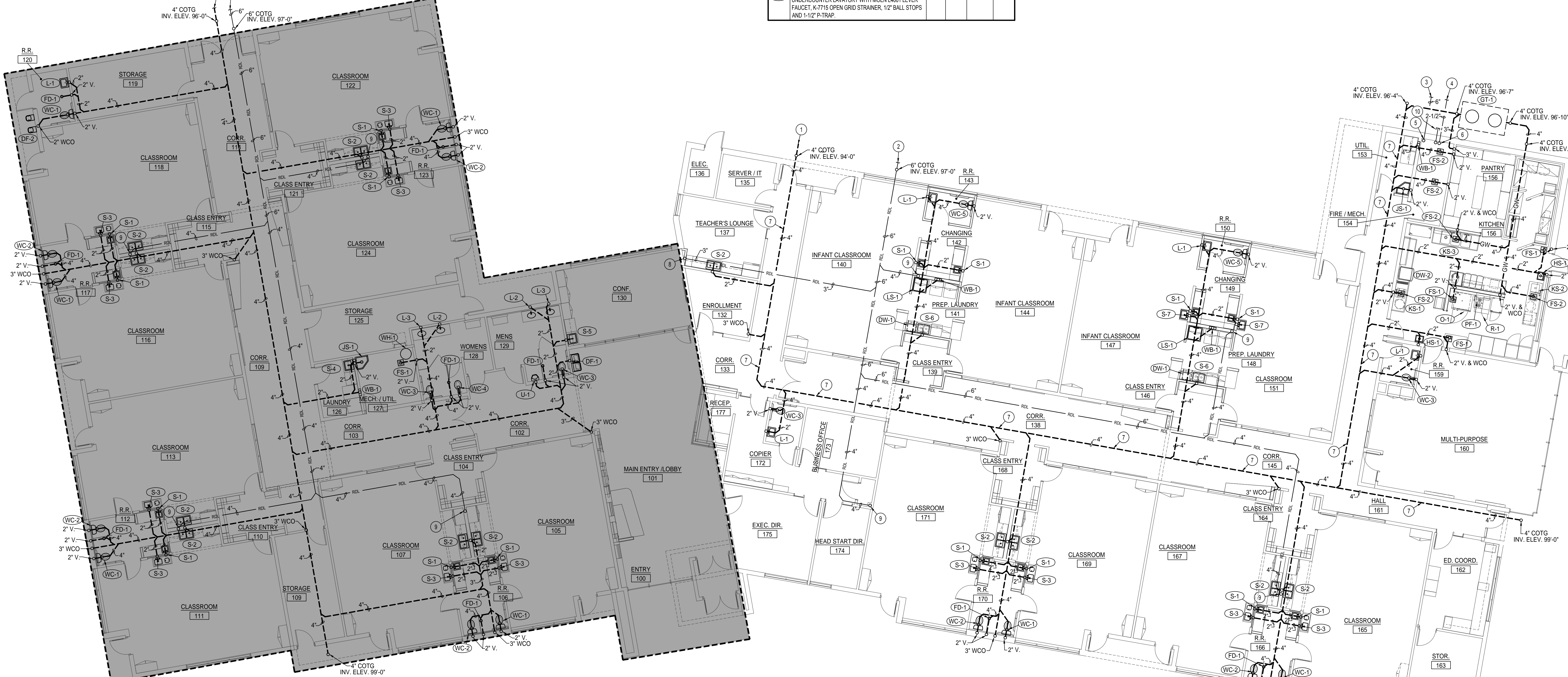
NOTE:
RISER TO BE DEFERRED SUBMITAL FROM LICENSED LIFE SAFETY CONTRACTOR.



NOTE:
PROVIDE SLEEVES WHERE PIPING PENETRATES BUILDING AT FLOOR AND WALLS. SEAL AROUND PENETRATION WITH FIRE RESISTANT MATERIAL AT FLOOR. PROVIDE 2" ANNULAR SPACE AROUND AND RESTRAIN FLANGE SPIGOT.

VERTICAL FIRE RISER DETAIL
NO SCALE

PHASE 2 EXPANSION



FOUNDATION PLUMBING PLAN
SCALE: 1/8" = 1'-0"

SYM.	DESCRIPTION	HOT	COLD	WASTE	VENT
DF-1	BLEVEL DRINKING FOUNTAIN - ELKAY MODEL EZ21806SK WITH EZ201 BOTTLE FILLER. 1/2" CW & S.S. SINGLE COMP. SINK SYMBOLS S-248/AM DECK MOUNTED FAUCET. (1) STRAINER. 1-1/2" P-TRAP BRASSCRAFT SERIES RT ANGLE STOPS & SUPPLIES.		12"	1-1/2"	1-1/2"
DF-2	BLEVEL OUTDOOR NON-REFRIGERATED DRINKING FOUNTAIN - ELKAY MODEL EH1207IC FOUNTAIN WITH BUBBLERS. 1/2" STOP AND 1-1/2" P-TRAP. PROVIDE ALL INTERCONNECTING PIPING AND DRAIN.		12"	1-1/2"	1-1/2"
DS-1	ROOF DRAIN DOWN SPOUT - JAY R SMITH MODEL 1770 SIZE 3" WITH ROUGH BRONZE FINISH AND 3" DRAIN LINE CONNECTION.			3"	
DS-2	ROOF DRAIN DOWN SPOUT - JAY R SMITH MODEL 1770 SIZE 4" WITH ROUGH BRONZE FINISH AND 4" DRAIN LINE CONNECTION.			4"	
DW-1	UNDERCOUNTER DISHWASHER - PROVIDED BY OWNER. CONNECT 3/4" DRAIN TO SINK SIDE OF P-TRAP W/ DW CONNECTION & CONNECT TO 1/2" HW WITH BALL STOP.	3/4"		3/4"	
DW-2	DISHWASHER K.E.C. CAS. - TO BE FURNISHED AND INSTALLED BY K.E.C. PLUMBING CONTRACTOR TO ROUGH-IN AND CONNECT 3/4" HW LINE TO BOOSTER HEATER AND 1-1/2" INDIRECT WASTE TO FLOOR SINK WITH AIRGAP.	3/4"		1-1/2"	
FD-1	2" FLOOR DRAIN WITH PRIMER - ZURN Z-4158 WITH 5/8" NICKEL-BRONZE STRAINER AND 2" DEEP SEAL P-TRAP WITH ZURN 1022 TRAP PRIMER.			2"	2"
FS-1	FLOOR SINK - ZURN Z-1900-KC WITH WHITE ENAMEL FINISH, DOME STRAINER AND 4" DEEP SEAL P-TRAP. PROVIDE 3/4" GRATE OVER SINK.			2"	2"
FS-2	FLOOR SINK - ZURN Z-1900-KC WITH WHITE ENAMEL FINISH, DOME STRAINER AND 4" DEEP SEAL P-TRAP. PROVIDE 3/4" GRATE OVER SINK.			4"	2"
HS-1	HANDWASH SINK (E.C. CAS.) - TO BE FURNISHED AND INSTALLED BY K.E.C. PLUMBING CONTRACTOR TO ROUGH-IN AND CONNECT 1/2" CW & HW LINE COMPLETE WITH BALL TYPE SHUT-OFF VALVES & S.S. BRAIDED SUPPLIES. 1-1/2" 1/4" PIECE & P-TRAP. PROVIDE AND INSTALL WATTS 1/2" THERMOSTATIC MIXING VALVE TO BE MOUNTED UNDER SINK ON WALL.	1/2"	1/2"	1-1/2"	1-1/2"
HB-1	EXTERIOR HOSE BIBB - PRIER MODEL C-434 FREEZE PROOF EXTERIOR HOSE BIBB WITH DOUBLE CHECK VALVE & ANTI-SIPHON VACUUM BREAKER. SATIN NICKEL FINISH.		3/4"		
GT-1	PRECAST CONCRETE GREASE INTERCEPTOR - REFER TO DETAIL ON SHEET P200 FOR SIZE AND MATERIALS.			4"	3"
JS-1	FLOOR MOUNTED SERVICE SINK - KOHLER K-6710 'WHITBY' W/ K-840 WIRE RIM GUARD, K-802 FAUCET ASSEMBLY & K-142 STRAINER & DEEP SEAL P-TRAP. HOSE & HOSE CLAMP.	1/2"	1/2"	2"	2"
KS-1	KITCHEN SINK K.E.C.#7 & 7.1 - TO BE FURNISHED AND INSTALLED BY K.E.C. PLUMBING CONTRACTOR TO ROUGH-IN AND CONNECT 1/2" CW & HW LINE TO PRE-RISE FAUCET COMPLETE WITH BALL TYPE SHUT-OFF VALVES & S.S. BRAIDED SUPPLIES. 2" WASTE TO FLOOR SINK WITH AIRGAP.	1/2"	1/2"	2"	
KS-2	DOUBLE COMP. KITCHEN SINK K.E.C.#8 & 8.1 - TO BE FURNISHED AND INSTALLED BY K.E.C. PLUMBING CONTRACTOR TO ROUGH-IN AND CONNECT 1/2" CW & HW LINE TO FAUCET COMPLETE WITH BALL TYPE SHUT-OFF VALVES & S.S. BRAIDED SUPPLIES. 2" WASTE TO FLOOR SINK WITH AIRGAP.	1/2"	1/2"	2"	
KS-3	TRIPLE COMP. KITCHEN SINK K.E.C.#6 & 6.1 - TO BE FURNISHED AND INSTALLED BY K.E.C. PLUMBING CONTRACTOR TO ROUGH-IN AND CONNECT (2) 1/2" CW & HW LINES TO (2) FAUCETS COMPLETE WITH BALL TYPE SHUT-OFF VALVES & S.S. BRAIDED SUPPLIES. 2" WASTE HEADER TO FLOOR SINK WITH AIRGAP.	1/2"	1/2"	2"	
L-1	ADA WALL MOUNTED LAVATORY - KOHLER 2023 'GREENWICH' (SIZE 20"x18") WITH K-7715 OPEN GRID STRAINER. MOEN L4601 FAUCET. 1/2" STOPS AND 1-1/2" P-TRAP. PROVIDE CONCEALED HWM CARRIER SYSTEM AND INSULATING JACKET ON HW AND DRAIN PIPE.	1/2"	1/2"	1-1/2"	1-1/2"
L-2	ADA UNDERCOUNTER LAVATORY - ELKAY ELUH1511 S.S. UNDERCOUNTER LAVATORY WITH MOEN L4601 LEVER FAUCET. K-7715 OPEN GRID STRAINER. 1/2" BALL STOPS AND 1-1/2" P-TRAP. PROVIDE INSULATING JACKET ON HW PIPING AND P-TRAP.	1/2"	1/2"	1-1/2"	1-1/2"
L-3	UNDERCOUNTER LAVATORY - ELKAY ELUH1511 S.S. UNDERCOUNTER LAVATORY WITH MOEN L4601 LEVER FAUCET. K-7715 OPEN GRID STRAINER. 1/2" BALL STOPS AND 1-1/2" P-TRAP.	1/2"	1/2"	1-1/2"	1-1/2"

SYM.	DESCRIPTION	HOT	COLD	WASTE	VENT
LS-1	SINGLE COMPARTMENT TUB SINK WITH FAUCET - JUST MODEL Z-127 18 GA. S.S. SINGLE COMP. SINK SYMBOLS S-248/AM DECK MOUNTED FAUCET. (1) STRAINER. 1-1/2" P-TRAP BRASSCRAFT SERIES RT ANGLE STOPS & SUPPLIES.	12"	12"	1-1/2"	1-1/2"
GS-1	150,000 BTU GAS COMBI-OVEN K.E.C.#28 - TO BE FURNISHED AND INSTALLED BY K.E.C. PLUMBING CONTRACTOR TO ROUGH-IN AND CONNECT 1/2" CW COMPLETE WITH BALL TYPE SHUT-OFF VALVE & S.S. BRAIDED SUPPLY. 2" WASTE TO FLOOR SINK WITH AIRGAP. PLUMBING CONTRACTOR TO INSTALL 3/4" (2) GAS LINE TO UNIT COMPLETE WITH SWIVEL LINE, SHUT-OFF VALVE, AND FLEXIBLE CONNECTION.		1/2"	2"	
OD-1	ROOF OVERFLOW DRAIN - JAY R SMITH MODEL 1800 SIZE 3" WITH 2" HIGH WATER DAM, UNDERDECK CLAMP AND 3/8" SQUARE FLASHING.			3"	
OD-2	ROOF OVERFLOW DRAIN - JAY R SMITH MODEL 1800 SIZE 4" WITH 2" HIGH WATER DAM, UNDERDECK CLAMP AND 3/8" SQUARE FLASHING.			4"	
PF-1	GAS COMBI-OVEN K.E.C.#22 - TO BE FURNISHED AND INSTALLED BY K.E.C. PLUMBING CONTRACTOR TO ROUGH-IN AND CONNECT 1/2" CW & 1/2" HW COMPLETE WITH BALL TYPE SHUT-OFF VALVES & S.S. BRAIDED SUPPLIES.	1/2"	1/2"		
R-1	90,000 BTU GAS RANGE K.E.C.#29 - TO BE FURNISHED AND INSTALLED BY K.E.C. PLUMBING CONTRACTOR TO ROUGH-IN AND INSTALL 3/4" (2) GAS LINE TO UNIT COMPLETE WITH SWIVEL LINE, SHUT-OFF VALVE, AND FLEXIBLE CONNECTION.				
RB-1	REFRIGERATOR SUPPLY BOX - GUY GRAY MODEL B1M075 W/ 1/2" x 1/4" SHUT OFF VALVE.		1/2"		
RD-1	ROOF DRAIN - JAY R SMITH MODEL 1010 SIZE 3" WITH UNDERDECK CLAMP AND 3/8" SQUARE FLASHING.			3"	
RD-2	ROOF DRAIN - JAY R SMITH MODEL 1010 SIZE 4" WITH UNDERDECK CLAMP AND 3/8" SQUARE FLASHING.			4"	
RP-1	CIRCULATING PUMP - GRUNDFOSS MODEL UP15-10B7 BRONZE PUMP WITH 3/4" FLANGES (2 GPM @ 0' HEAD) 120/601.		3/4"		
S-1	SINGLE COMPARTMENT SINK - ELKAY MODEL B0115 WITH 18 GA TYPE 304 STAINLESS STEEL CONSTRUCTION. 3-HOLE FAUCET DRILLINGS. LK406GNAL2 FAUCET. LK-99 STRAINER. 1-1/2" P-TRAP AND 1/2" BALL TYPE STOP VALVES.	1/2"	1/2"	1-1/2"	1-1/2"
S-2	DOUBLE COMPARTMENT SINK - ELKAY MODEL LR-319 WITH 18 GA TYPE 304 STAINLESS STEEL CONSTRUCTION. 3-HOLE FAUCET DRILLINGS. MOEN 7500L FAUCET. (2) LK-99 STRAINERS. 1-1/2" P-TRAP AND 1/2" BALL TYPE STOP VALVES.	1/2"	1/2"	2"	2"
S-3	CLASSROOM 2 COMP. SINK - W/ BUBBLER - ELKAY MODEL DRAD207RUC WITH (1) LK406GNAL2 FAUCET. LK 141A BUBBLER. (1) LK-88 & (1) LK-88 STRAINERS. 1-1/2" P-TRAP AND 1/2" BALL TYPE STOP VALVES.	1/2"	1/2"	2"	2"
S-4	SINGLE COMP. SINK WITH FAUCET - ELKAY MODEL LR-219 WITH 18 GA TYPE 304 STAINLESS STEEL CONSTRUCTION. 3-HOLE FAUCET DRILLINGS. LK-4100 LEVER HANDLE FAUCET. LK-99 STRAINERS. 1-1/2" P-TRAP AND 1/2" BALL TYPE STOP VALVES.	1/2"	1/2"	2"	2"
S-5	SINGLE COMPARTMENT SINK - ELKAY MODEL LRAD-1918 STAINLESS STEEL SINK WITH LK406GNAL2 H-ARC FAUCET WITH WRIST BLADE HANDLES. LK35 DUC STRAINER. 1/2" STOPS AND 1-1/2" P-TRAP.	1/2"	1/2"	2"	2"
S-6	DOUBLE COMP. SINK WITH FAUCET - ELKAY MODEL D02519 WITH 18 GA TYPE 304 STAINLESS STEEL CONSTRUCTION. 3-HOLE FAUCET DRILLINGS. LK-4100 LEVER HANDLE FAUCET. LK-99 STRAINERS. 1-1/2" P-TRAP AND 1/2" BALL TYPE STOP VALVES.	1/2"	1/2"	2"	2"
S-7	SINGLE COMPARTMENT SINK - ELKAY MODEL LRAD-17655 STAINLESS STEEL SINK WITH LK406GNAL2 H-ARC FAUCET WITH WRIST BLADE HANDLES. LK35 DUC STRAINER. 1/2" STOPS AND 1-1/2" P-TRAP.	1/2"	1/2"	2"	2"
SH-1	ADA WALL MOUNTED URINAL - KOHLER K-4889-1 'FRESHMAY' WITH WALL CARRIER & SLOAN REGAL 186 SPSM4S BATTERY FLUSH VALVE. MOUNT AT ADA LEVEL.		3/4"	2"	2"
WB-1	WASHING MACHINE HOOKUP - GUY GRAY MODEL B62001S COMBINATION BOX COMPLETE WITH 2" WASTE LINE AND P-TRAP. 1/2" HOT & COLD WATER LINES FROM TOP.	1/2"	1/2"	2"	2"

SYM.	DESCRIPTION	HOT	COLD	WASTE	VENT
WC-1	ADA CHILD HEIGHT TANK TYPE WATER CLOSET - AMERICAN STANDARD BABY DEVERO 1.28 GPF FLOW/10 INCH HIGH TOILET. BABY DEVERO 8001GS WHITE OPEN FRONT SEAT. BOLT CAPS AND 1/2" STOP VALVE. RIGHT OR LEFT HAND FLUSH LEVER SO LEVER IS ON OPEN SIDE OF ACCESSIBLE STALLS.		1/2"	4"	2"
WC-2	CHILD HEIGHT TANK TYPE WATER CLOSET - AMERICAN STANDARD BABY DEVERO 1.28 GPF FLOW/10 INCH HIGH TOILET. BABY DEVERO 8001GS WHITE OPEN FRONT SEAT. BOLT CAPS AND 1/2" STOP VALVE.		1/2"	4"	2"
WC-3	ADA FLUSH VALVE WATER CLOSET - KOHLER K-4588 'HIGHCLIFF' WITH ELONGATED BOWL. K-4670C WHITE OPEN FRONT SEAT. SLOAN REGAL BATTERY FLUSH VALVE AND BOLT CAPS.		1"	4"	2"
WC-4	FLUSH VALVE WATER CLOSET - KOHLER K-4580 'WELCOME' WITH ELONGATED BOWL. K-4670C WHITE OPEN FRONT SEAT. SLOAN REGAL BATTERY FLUSH VALVE AND BOLT CAPS.		1"	4"	2"
WC-5	ADA TANK TYPE WATER CLOSET - KOHLER K-3999 'HIGHLINE' W/ ELONGATED BOWL. K-4670C WHITE OPEN FRONT SEAT. BOLT CAPS AND 1/2" STOP VALVE. RIGHT OR LEFT HAND FLUSH LEVER TO MEET ADA ACCESS.		1/2"	4"	2"
WH-1	GAS FRED WATER HEATER - A.O. SMITH MODEL BTH-150 100 GALLON CAPACITY 150,000 BTU INPUT HEATER WITH TAP RELIEF VALVE. 120V/100W POWER REQUIRED. SEE PIPING DIAGRAM ON SHEET P200.		1-1/2"	1-1/2"	
WS-1	WATER SOFTENER - SOFTENER TO BE SIZED AND PROVIDED BY LOCAL SOFT WATER COMPANY. SOFTENER TO PROVIDE 50 GPM FLOW AT LOCAL GRAIN HARDNESS.				
WS-2	WATER SOFTENER - SOFTENER TO BE SIZED AND PROVIDED BY LOCAL SOFT WATER COMPANY. SOFTENER TO PROVIDE 40 GPM FLOW AT LOCAL GRAIN HARDNESS.			1-1/4"	

- PLAN NOTES:**
- SEE CIVIL SITE PLAN FOR CONTINUATION OF 4" SEWER MAIN.
 - SEE CIVIL SITE PLAN FOR CONTINUATION OF 6" UNDERGROUND ROOF DRAIN PIPING.
 - SEE CIVIL SITE PLAN FOR CONTINUATION OF 6" FIRE LINE.
 - SEE CIVIL SITE PLAN FOR CONTINUATION OF 2-1/2" DOMESTIC CW MAIN.
 - RISE 6" FIRE LINE UP THRU SLAB TO FIRE RISER ASSEMBLY ABOVE. SEE DETAIL ON THIS SHEET.
 - RISE 2-1/2" DOMESTIC CW MAIN UP THRU SLAB TO WATER PRESSURE REDUCING STATION ABOVE. SEE DETAIL ON SHEET P200.
 - RUN 4" WASTE MAIN LINE UNDER SLAB AT 18" PER FOOT SLOPE.
 - 3" ROOF DRAIN LINE UP IN WALL ABOVE. SEE SHEET P101 FOR CONT. OF PIPING.
 - 4" ROOF DRAIN LINE UP IN WALL ABOVE. SEE SHEET P101 FOR CONT. OF PIPING.
 - 1-1/4" LAWN IRRIGATION STUB. SEE PRY DETAIL ON SHEET P200.

PLUMBING LEGEND

SYMBOL	DESCRIPTION
V	VENT
VTR	VENT THRU ROOF
CD	CLEANOUT
WCO	WALL CLEANOUT
COTG	CLEANOUT TO GRADE
g	PIPE DROP
o	PIPE RISE
o	BALL TYPE ISOLATION VALVE
---	SOIL OR WASTE PIPING
---	VENT LINE PIPING
---	DOMESTIC COLD WATER
---	DOMESTIC HOT WATER PIPING
---	DOMESTIC HOT WATER REGR.
REL	ROOF DRAIN PIPING
ROO	ROOF OVERFLOW DRAIN PIPING
G	NATURAL GAS PIPING
F	FIRE SPRINKLER PIPING

Engineered Systems Associates
1355 EAST CENTER
POCATELLO, IDAHO 83201
PHONE: (208) 233-0501
FAX: (208) 233-0529
EMAIL: esa@engsys.com
ESA JOB NUMBER: 20075

EVANSTON CHILD DEVELOPMENT CENTER
PHASE 1
FOUNDATION PLUMBING PLAN
EVANSTON, WY

CONTRACTOR SHALL VERIFY ALL DIMENSIONS & CONDITIONS SHOWN OR IMPLIED.
DRAWING SCALE APPLIES TO 30" X 42" SHEET SIZE.
REVISION: _____ DATE: _____
DRAWN BY: _____
CHECKED BY: _____
JOB NUMBER: 14371-19A
PROJECT DATE: JUNE 2021
SHEET: P100
OF